

# Sunstar

# WINNEBAGO



## Why Sunstar?

- Touch screen AM/FM dash radio with CD/DVD player
- LED lighting
- Dash workstation with USB cable connection
- MCD blackout roller shades
- Versa easy-swivel driver's seat
- One-piece fiberglass roof
- Bunk beds (31BE)
- Available exterior entertainment center (31BE)
- Available powered StudioLoft™ bed
- Powered patio awning
- Walk-through bath with private bedroom access (31BE)



On the Cover: 31KE Solar Flare Deluxe Graphics

31KE Rockslide with Honey Cherry Cabinetry

## Cornering the Market in Value

Inch for inch, you won't find more value in a Class A coach than you will in the Sunstar®—built to the legendary quality standards of Winnebago. This family-friendly coach is offered in four budget-friendly floorplans ranging from 27 to 31 feet. Its value

shows through with standard features you won't often find at this price, such as the Versa easy-swivel driver's seat and MCD roller shades. The comfort, quality, and value of the Class A lifestyle is within reach. Your Sunstar awaits.



### Recognized Quality

The Recreation Vehicle Dealer Association annually rates RV manufacturers and awards the Quality Circle Award to manufacturers that provide exceptional products, service and support. Winnebago Industries is proud to be the only manufacturer that has received this award every year since its inception.





31KE Rockslide with Honey Cherry Cabinetry

The Sunstar offers great places to rest and relax with a dinette and sofa in the 29VE, 31KE and 31BE that convert into comfortable sleeping spaces. An additional sleeping area is available if you select the powered StudioLoft™ bed that drops down from the cab ceiling. Enjoy a large HDTV that is connected to the dash stereo DVD player.



MCD Blackout Roller Shades



31KE Versa Easy-Swivel Driver's Seat



Available StudioLoft Bed with Ladder



31KE Sofa



OnePlace® Systems Monitor



31KE U-Shaped Dinette



31KE Sofa as Bed



31KE HDTV



31KE U-Shaped Dinette as Bed



Front Wraparound Curtain



You provide the recipe. The Sunstar provides the cooking essentials such as an oven, three-burner range, and microwave oven. When your culinary masterpiece is complete, enjoy it with family and friends in the classic dinette (26HE, 29VE and 31BE) or a large U-shaped dinette (31KE).



 31KE Galley



Large 2-Door Refrigerator/Freezer



Microwave Oven with Touch Controls



3-Burner Range with Oven



Molded, Double Sink





31KE Bedroom

The walk-around queen bed does more than provide a great night's rest; it lifts up to reveal a generous storage space for larger items (31BE storage under bunk). The bunk beds in the 31BE are always popular with kids and are even more enticing when you add the individual DVD players with monitors and headphones. A bedroom HDTV is available in the 31BE.



31KE Wardrobe



31KE Shirt Closet



Bath Skylight



31KE Shower



31KE Bath



Dash

Travel coast to coast in the comfort of multi-adjustable cab seats that swivel to face the lounge when parked. The dash workstation has a built-in USB and 12-volt power connection for a laptop computer. For your entertainment, the dash stereo includes AM/FM, a CD/DVD player, and a USB connection. It even comes with a handheld remote that you can use throughout the coach.



Dash Workstation



Powered Mirrors with Defrost



There's nothing like watching a great movie under the stars, and the 31BE makes it possible with the available exterior entertainment center with an HDTV and speakers. A powered patio awning comes standard on all floorplans. Storage is not only abundant, but is easily accessed using large, single-paddle latches.



Automatic Entrance Door Steps



Exterior Service Center



Exterior Storage Compartment



Stainless Steel Wheel Liners



**Fiberglass Roof**

The crowned, one-piece fiberglass roof is backed by a 10-year limited parts-and-labor roof skin warranty.

**Rubber Can't Cut It**

Rubber roofs used by competitors can streak and degrade over time.

**Thermo-Panel® Sidewalls**

By layering fiberglass and high-density block foam insulation with welded aluminum support structures, we create some of the industry's strongest, most durable and lightweight sidewalls.

**E-Coating**

An electrodeposition coating helps protect critical steel components.

**Embedded Steel** Metal substructures embedded into the sidewall provide solid attachment points to keep cabinets and appliances mounted securely in place.

**Laser-Cut Tubing**

Precision laser cutters create precision joints in structural steel that are stronger and require less welding.



**Interlocking Joints**

Specially engineered interlocking joints connect the floor, sidewalls and roof where competitors often rely on simple screws to bear the weight.



**Solid Framework** Aluminum extruded in our own facility to our exacting standards creates an extremely strong and solid structural framework.

**SUPER  
STRUCTURE**

BUILT TO LAST

Every coach—from our smallest Class C to our largest diesel-pusher model—is built to Winnebago's® legendary SuperStructure® construction design. It's a process developed and refined over more than 50 years of building some of the strongest, most durable coaches in the industry.

**TESTING** Before rolling out of our factories, every coach undergoes an extensive 113-point inspection. Each coach also passes a high-pressure water test that simulates rain at a rate of 50-inches per hour to check for leaks. During the design process, our computer simulations, physical testing center, and rigorous test track ensure each model is built to last.



**DETAILS** At Winnebago, we treat the features you can't see with the same care as the ones you can. Look in the access panels of some of our competitors' coaches and you'll see loose insulation and wires haphazardly strewn about. Winnebago maintains a clean fit and finish throughout so your coach will last for the long haul.



**BUILT IN-HOUSE** We process and finish key aluminum parts. We rotocast our own plastic components. In fact, we manufacture most of our own parts so they are designed to fit the space, rather than fitting the space to an awkward off-the-shelf component size.



**SUPER  
STRUCTURE**  
BUILT TO LAST


Visit [BetterBuiltRVs.com](http://BetterBuiltRVs.com) to gain real insight into what goes into a Winnebago motorhome.

**TAKE A TOUR** We're proud of our processes, state-of-the-art facilities, and the people who make Winnebago number one. We invite you to visit our complex in Forest City, Iowa, for a firsthand look at the dedication and technology behind every motorhome we build.

Call (641) 585-6936 or (800) 643-4892 or visit us online at [Winnebagolnd.com/company/visit](http://Winnebagolnd.com/company/visit) for more information.

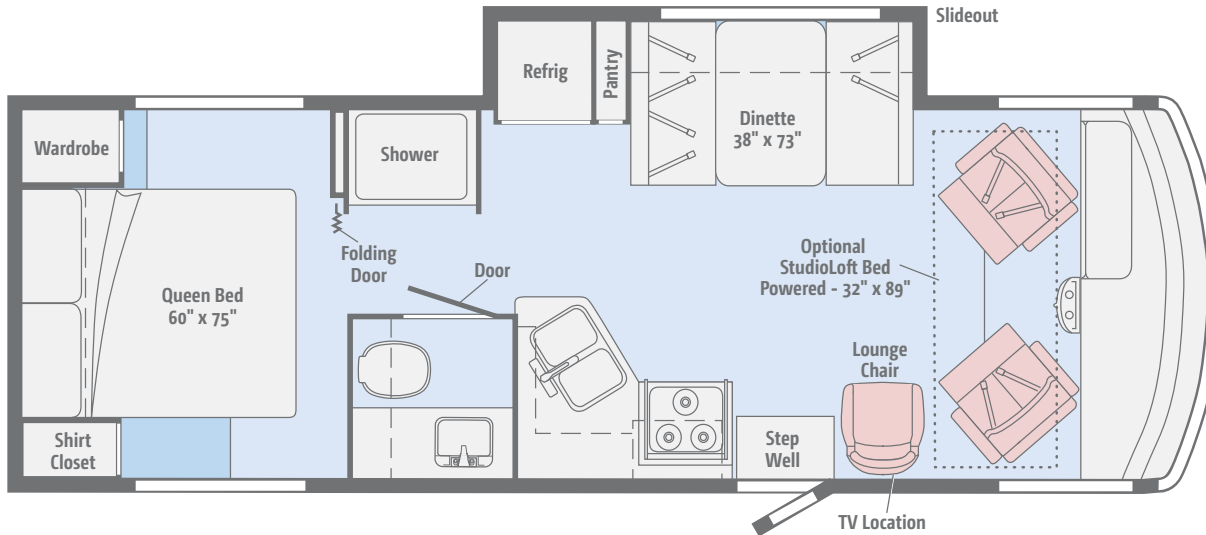




 [Click here to explore this floorplan's web page.](#)

## 26HE

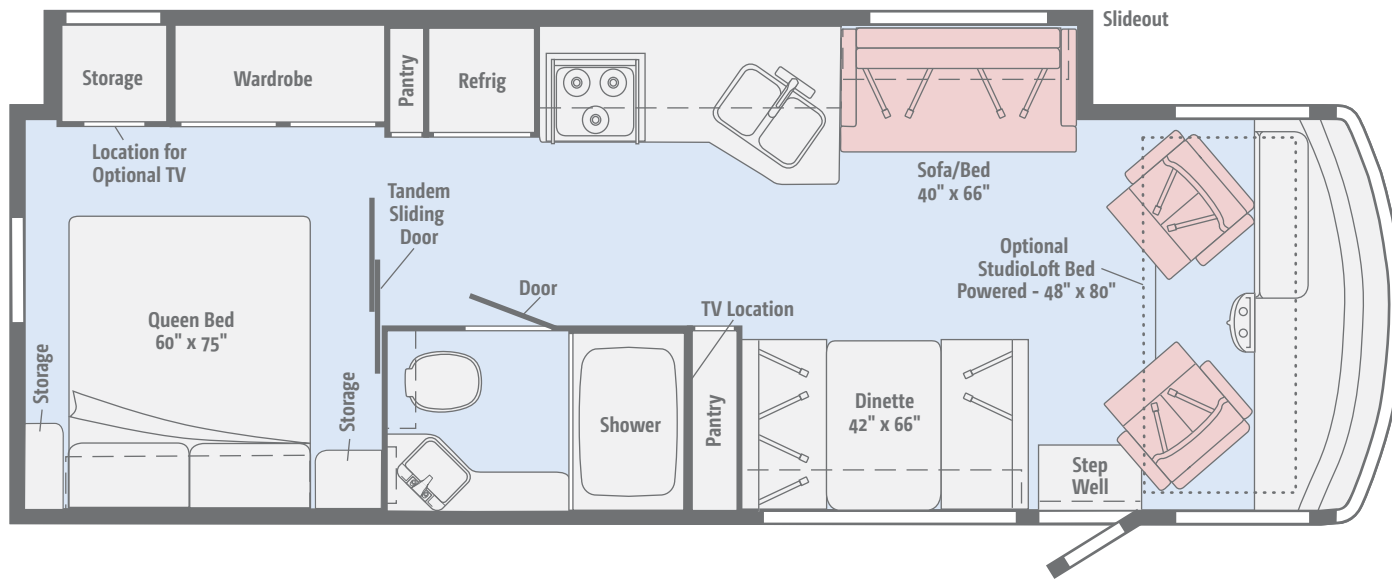
This classic floorplan offers a dinette, full-featured galley, and available powered StudioLoft™ bed in the lounge area. The private master bedroom features a walk-around queen bed, wardrobe, and shirt closet.



[Click here to explore this floorplan's web page.](#)

## NEW 29VE

This new floorplan offers a StudioLoft bed, spacious dinette and a 40" HDTV. This features a private bathroom, walk-around bedroom, wardrobe and bedroom vanity.

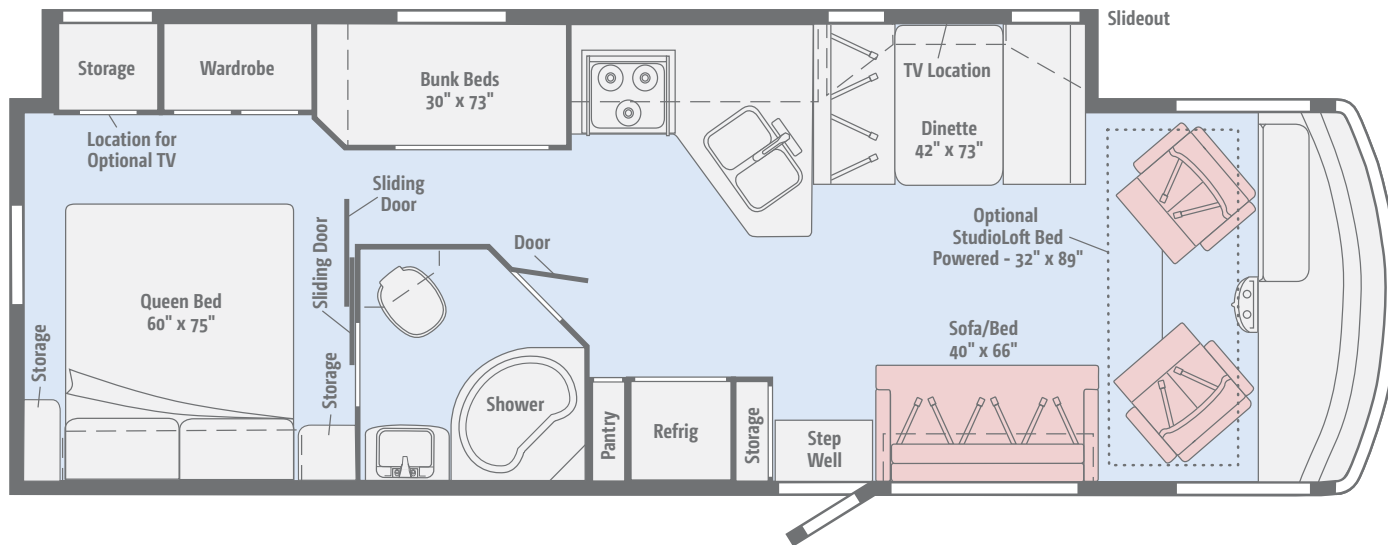




[Click here to explore this floorplan's web page.](#)

## NEW 31BE

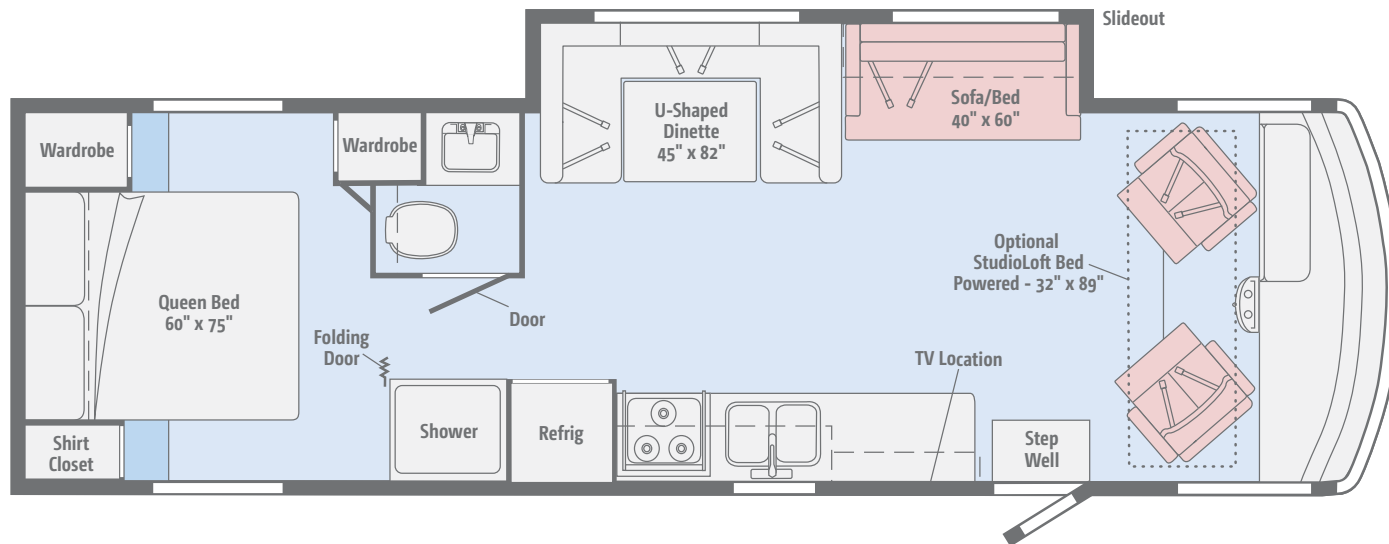
This family-friendly floorplan can sleep eight thanks to the bunk beds and an available powered StudioLoft bed. The full-wall slide opens up to provide extra room for a full-featured galley and walk-through bath with private bedroom access.



[Click here to explore this floorplan's web page.](#)

## 31KE

Sleeping spaces abound in this floorplan with the U-shaped dinette, sofa/bed, and available powered StudioLoft bed. The galley incorporates an HDTV to open up additional living space. A private master bedroom features a walk-around queen bed with a shirt closet and two wardrobes.





Choose from four fabric collections with a Honey Cherry wood finish.

## Infinity



Primera



Feature Fabric



Bedspread



Laminate Countertop



Vinyl Flooring

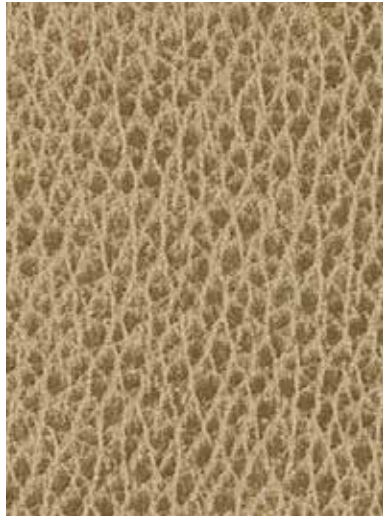


Honey Cherry

Winnebago® reserves the right to change décor materials and specifications without notice or obligation.

Choose from four fabric collections with a Honey Cherry wood finish.

## Rockslide



Primera



Feature Fabric



Bedspread



Laminate Countertop



Vinyl Flooring



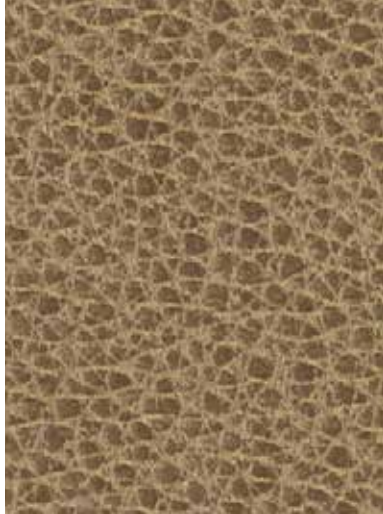
Honey Cherry

Winnebago® reserves the right to change décor materials and specifications without notice or obligation.



Choose from four fabric collections with a Honey Cherry wood finish.

## Legend



Primera



Feature Fabric



Bedspread



Laminate Countertop



Vinyl Flooring



Honey Cherry

Winnebago® reserves the right to change décor materials and specifications without notice or obligation.

Choose from four fabric collections with a Honey Cherry wood finish.

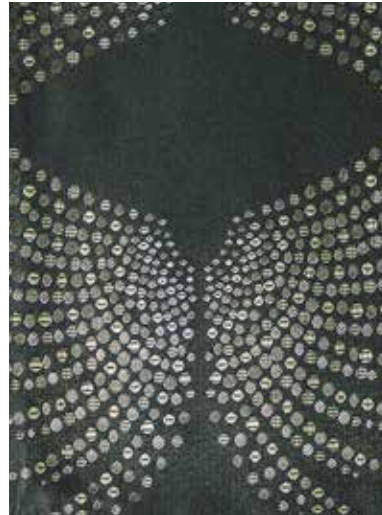
## Stardust



Primera



Feature Fabric



Bedspread



Laminate Countertop



Vinyl Flooring



Honey Cherry

*Winnebago® reserves the right to change décor materials and specifications without notice or obligation.*



The Sunstar comes standard with a premier high-gloss deluxe graphics package.



**Solar Flare**  
DELUXE GRAPHICS

Weights & Measures	26HE	29VE	31BE	31KE
Length	27'1"	29'11"	31'11"	31'3"
Exterior Height <sup>1</sup>	12'2"	12'2"	12'2"	12'2"
Exterior Width <sup>2</sup>	8'5.5"	8'5.5"	8'5.5"	8'5.5"
Exterior Storage <sup>3</sup> (cu. ft.)	117	145	147	168
Awning Length	19'	17'	19'	17'
Interior Height	6'8"	6'8"	6'8"	6'8"
Interior Width	8'0.5"	8'0.5"	8'0.5"	8'0.5"
Freshwater Tank Capacity <sup>4</sup> (gal.)	54	68	70	64
Water Heater Capacity (gal.)	6	6	6	6
Holding Tank Capacity - Black/Gray <sup>4</sup> (gal.)	43/38	40/61	43/59	41/57
LP Capacity <sup>5</sup> (gal.)	18	18	18	18
Fuel Capacity (gal.)	80	80	80	80
GCWR <sup>6</sup> (lbs.)	23,000	23,000	23,000	23,000
GVWR (lbs.)	16,000	18,000	18,000	16,000
GAWR - Front (lbs.)	6,500	7,000	7,000	6,500
GAWR - Rear (lbs.)	11,000	12,000	12,000	11,000
Wheelbase	158"	190"	208"	190"
Seating Capacity	5	5	7	6

## Ford® F53 Chassis

3-valve Triton® V10 engine SEFI, TorqShift™ 6-speed automatic transmission w/tow/haul, 175-amp. alternator

Hydraulic brakes w/ABS

Trailer Hitch<sup>6</sup> 5,000-lb. drawbar/500-lb. maximum vertical tongue weight

7-pin connector

Stainless steel wheel liners

Automatic hydraulic leveling jacks



Ford® F53 Chassis

## Cab Conveniences

**Radio/Rearview Monitor System** DVD receiver with 6.2" LCD color touch screen, handheld remote, iPod®/MP3 input, rear color camera, Bluetooth®, SiriusXM®-ready, Spotify®, AppRadio One

**Cab seats** adjustable armrests, fixed lumbar support, and multi-adjustable slide/recline/swivel

**3-point seat belts**

**Chassis/house battery radio power switch**

**Power steering w/tilt wheel**

**Power mirrors w/defrost**

**Front wraparound curtain**

**Cruise control**

**Map light**

**Sunvisors**

**Dash workstation w/12-volt powerpoints**

## Interior

**32" HDTV**

**39" HDTV (31BE)**

**40" HDTV (29VE)**

**Amplified digital TV antenna system**

**MCD blackout roller shades**

**OnePlace® systems monitor**

**Ventilator fan (lounge)**

**Powered ventilator roof vent (31BE bedroom)**

**Powered roof vent (bath)**

**Tinted windows**

**LED lights**

## OPTIONAL EQUIPMENT

**StudioLoft™ (powered w/ladder)**

## Galley

**Laminate countertops w/decorative backsplash**

**2-door refrigerator/freezer**

**Microwave oven w/touch controls**

**3-burner range w/oven**

**Range hood (31KE)**

## Bath

**Laminate countertop**

**Flexible showerhead**

**Textured glass shower door**

**Skylight**

**Toilet w/foot pedal**

## Bedroom

**Queen bed w/foam mattress and storage below**

**Bedspread**

**Headboard**

**Bunk beds w/foam mattresses, mattress covers, and privacy curtain (31BE)**

**Powered ventilator fan (29VE)**

## OPTIONAL EQUIPMENT

**2 DVD players w/10.1" LCD monitors and headphones (31BE bunk beds)**

**24" HDTV (29VE, 31BE)**



## Exterior

Premium high-gloss sidewall skin

Automatic entrance door steps

Powered patio awning

Front mud flaps

Porch light w/interior switch

Incandescent lighted storage compartments (in select compartments)

### OPTIONAL EQUIPMENT

Entertainment center 32" HDTV w/remote and speakers (29VE, 31BE)

Tailgate package (29VE)

## Heating & Cooling System

14,800 BTU air conditioner w/ChillGrille™

30,000 BTU low-profile furnace

## Electrical System

AC/DC load center, 45-amp. converter/charger

30-amp. power cord

4,000-watt Cummins Onan® MicroQuiet™ gas generator

2 deep-cycle Marine/RV Group 24 batteries

Battery disconnect system (coach)

Automatic dual-battery charge control

Auxiliary start circuit

AC duplex receptacle

Cable TV input

Exterior antenna jack

### OPTIONAL EQUIPMENT

AC/DC inverter w/remote panel and exterior antenna jack. Only available w/optional Tailgate Package (29VE)

## Plumbing System

Service Center colored labels, pressurized city water hookup w/diverter valve, drainage valves, 10' sewer hose

6-gallon LP water heater w/electronic ignition

Heated holding tank compartment

Permanent-mount LP tank w/gauge

On-demand water pump

TrueLevel™ holding tank monitoring system

Winterization Package water heater bypass valve and siphon tube

## Safety

Child seat tether anchor (forward facing dinette seat)

LP, smoke, and carbon monoxide detectors

10 BC fire extinguisher

Ground fault interrupter

High-mount brake lamp

## Warranty<sup>7</sup>

12-month/15,000-mile basic limited warranty<sup>8</sup>

36-month/36,000-mile limited warranty on structure<sup>8</sup>

10-year limited parts-and-labor warranty on roof skin<sup>8</sup>

### FOOTNOTES

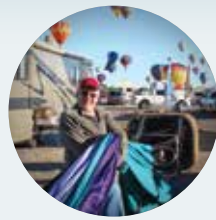
1. The height of each model is measured to the top of the tallest standard feature and is based on the curb weight of a typically equipped unit. The actual height of your vehicle may vary by several inches depending on chassis or equipment variations. Please check with your dealer for further information.
2. Floorplans feature a wide-body design - over 96" In making your purchase decision, you should be aware that some states restrict access on some or all state roads to 96" in body width. Before making your purchase decision, you should confirm the road usage laws in the states of interest to you.
3. The load capacity of your motorhome is designated by weight, not by volume, so you cannot necessarily use all available space when loading your motorhome.
4. Capacities are based on measurements prior to tank installation. Slight capacity variations can result due to installation applications.
5. Capacities shown are tank manufacturer's listed water capacity (WC). Actual filled LP capacity is 80% of listing due to overfilling prevention device on tank.
6. Actual towing capacity is dependent on your particular loading and towing circumstances which includes the GVWR, GAWR, and GCWR as well as adequate trailer brakes. Please refer to the Operator's Manual of your vehicle for further towing information.
7. See separate chassis warranty.
8. See your dealer for complete warranty information.

NA Not Available

Not all items available in combination. See dealer for details.

Winnebago's® continuing program of product improvement makes specifications, equipment, model availability, and prices subject to change without notice. Published content reflects the most current product information at time of printing. Please consult your dealer for individual vehicle features and specifications.





Let us host  
your next

# Adventure



WGOAdventures.com



Show your Winnebago love  
with high-quality gifts and wearables.



Apparel | Gifts | Parts | Gear

WinnebagoOutdoor.com

Find your style



Connect with Winnebago (Click one of the following)



Like us



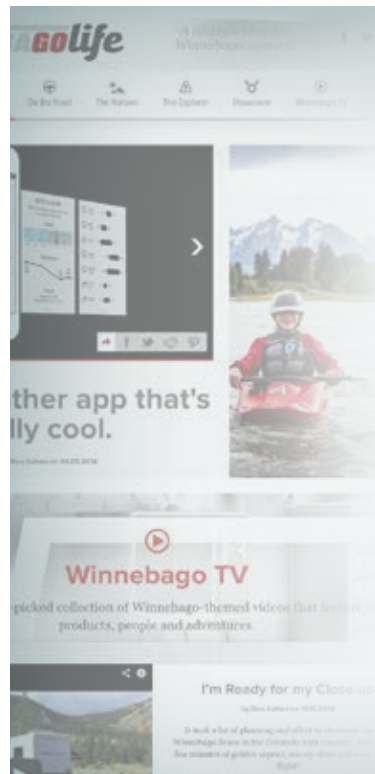
Follow us



Watch us

## WinnebagoInd.com Has All The Answers

Visit [WinnebagoInd.com](http://WinnebagoInd.com) on your computer, smartphone, or tablet for the latest product information and updates.



## Welcome to GoLife!

Visit our lifestyle blog for motorhome news, personal travelogues, and community stories.

[WinnebagoLife.com](http://WinnebagoLife.com)

# GoLife



# **PREFERRED CARE PROGRAM**

We back our motorhomes with best-in-class support both before and after the sale:

- 12-month/15,000-mile basic limited warranty
  - 36-month/36,000-mile limited warranty on structure
  - 10-year limited parts-and-labor warranty on fiberglass roof
  - Complimentary 24-hour roadside assistance program
- TripSaver® Fast Track Parts guarantees that in-stock warranty parts ship directly to your dealer within 24 hours
  - National dealer service network



For more information:  
[WGOService.com](http://WGOService.com)



From RV to personal insurance, Winnebago RV Insurance can provide all the coverage and services you need to feel at home on the road.

**For more information:**  
**(800) 642-4892**



## CONTACT US

### GENERAL INQUIRIES

Corporate Switchboard  
(641) 585-3535

### CURRENT PRODUCT OWNER AND SERVICE-RELATED INQUIRIES

(800) 537-1885  
or [winnebagoind.com](mailto:winnebagoind.com)

### NEW VEHICLE SALES INQUIRIES

[sales@winnebagoind.com](mailto:sales@winnebagoind.com)

### FAX

(641) 585-6966

### POSTAL ADDRESS

Winnebago Industries, Inc.  
P.O. Box 152  
Forest City, IA 50436

### STREET ADDRESS

Winnebago Industries, Inc.  
605 West Crystal Lake Road  
Forest City, IA 50436



## Join the Club, Join the Fun

Here's the perfect way to begin your life on the road as the owner of a new Winnebago – by joining the exclusive WIT Club. Start your adventure with other fun-loving WIT Club members from across the country and get the most out of your new Winnebago motorhome.



### Members enjoy:

- Caravans and rallies
- Newsletters
- Local and state group activities
- RV travel benefits

See more at  
[WITClub.com](http://WITClub.com)



## Grand National Rally

Each year, thousands of Winnebago owners descend upon Forest City, Iowa. Rally-goers enjoy an unforgettable week reconnecting with friends, taking tours, participating in activities, and more. Join the adventure next July!



[LaMesaRV.com](http://LaMesaRV.com)  
**800-496-8778**